

# END FITTINGS

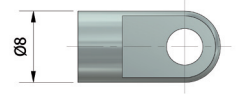
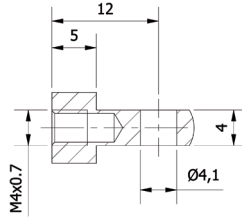
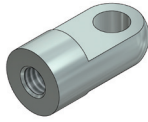
For gas spring 12-4



## 5. Loop M4

Steel  
Galvanized

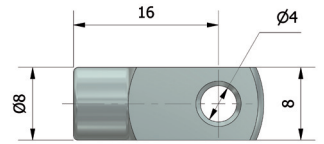
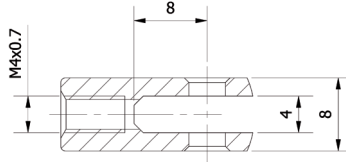
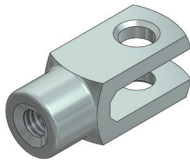
**Part no: 600**



## 7. Clevis M4

Steel  
Galvanized

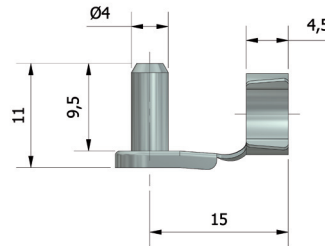
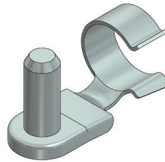
**Part no: 601**



## 8. Locking clip

Steel  
Galvanized  
Fits no. 7

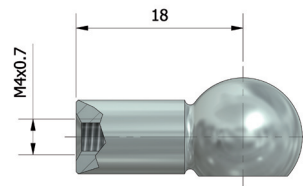
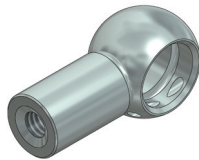
**Part no: 602**



## 9. Ball cup M4, Ø 8

Steel  
Galvanized  
Lockwire included

**Part no: 603**



## 12. Ball stud M4, Ø 8

Steel  
Galvanized

**Part no: 604**

